

## 3 versions available

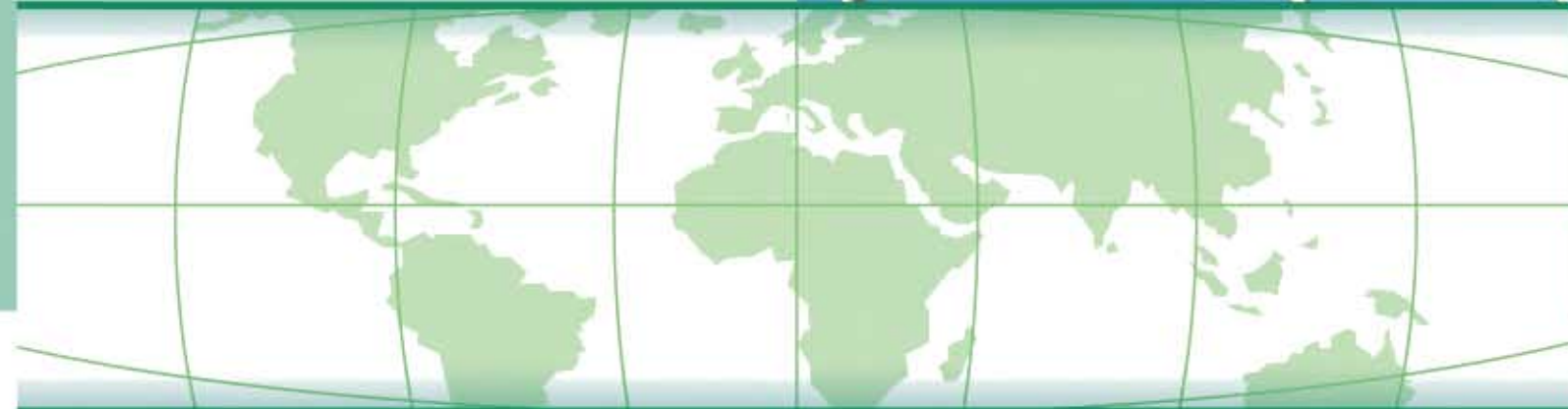
- Fixed version of chain hoist suspended by a hook
- Chain hoist hooked on manual push trolley
- Chain hoist equipped with an motor trolley

Do not hesitate to visit the site: [www.eccoverlinde.com](http://www.eccoverlinde.com)  
 In this way, you can access the downloading area for information on the ECCO electric chain hoist (commercial documentation, technical guide, CAD dimensions, user guide).



### VERLINDE is:

- The leading French manufacturer and exporter of hoisting and handling equipment.
- The strength of a group employing 10,500 persons.
- A range of 30 types of hoisting equipment from 60 to 80,000 kg.
- ISO 9001 quality assurance certification.
- A contact person to support you in more than 55 countries.



# Electric chain hoist

for loads from 500 to 2,000 kg

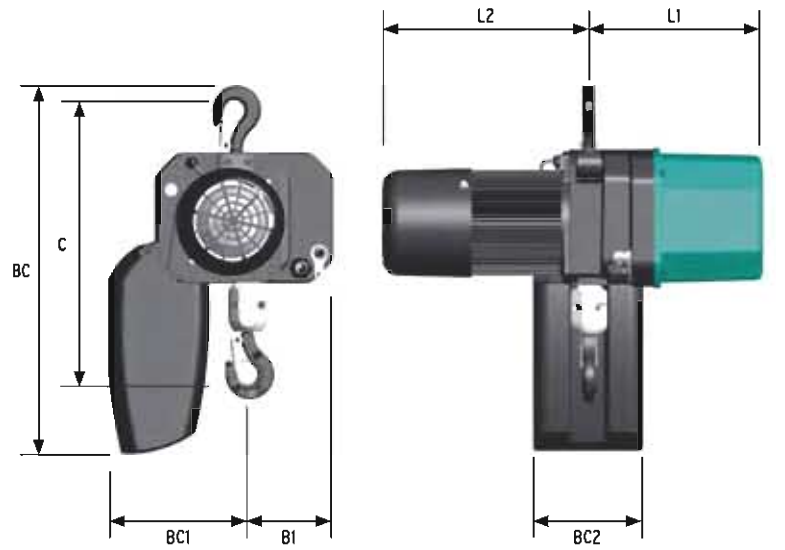


Quality at an ECCO price  
 Highly reliable components  
 EC certified chain hoists

ECCO type chain hoist	Capacity (kg)	FEM	Number of falls	Lifting chain (800N/mm <sup>2</sup> )	Maximum lifting height (m)	Hoisting motor power (kW)	Hoisting speed (m/min)	Trolley motor power (kW)	Trolley speed (m/min)
ECCO 5 504 m1	500	13m	1	6 x 18	21	0.4	4	0.15	10
ECCO 10 1004 m1	1000	13m	1	8 x 24	10.5	0.8	4	0.15	10
ECCO 10 2004 m1	2000	13m	2	8 x 24	5	1.6	4	0.15	10

### ➤ Dimensions

ECCO type chain hoist	Dimensions (mm)						
	C	L1	L2	BC	8C1	8C2	81
ECCO 5 504 m1	399	238	290	496	165	150	137
ECCO 10 1004 m1	486	275	353	548	198	150	153
ECCO 10 2004 m1	570	275	353	548	237	180	153



### VERLINDE is also a wide range of hoisting equipment



PLV manual lever hoist for loads from 250 to 7,500 kg



EUROCHAIN VL electric chain hoist for loads from 60 to 10,000 kg



TLV manual lever winch for loads from 800 to 3,200 kg



VHR hand chain block for loads from 125 to 10,000 kg



2, boulevard de l'Industrie - B.P. 20059 - 28509 Vernouillet cedex - France  
 Phone: (33) 02 37 38 95 95 - Fax: (33) 02 37 38 95 99  
 Internet: [www.verlinde.com](http://www.verlinde.com)



[www.eccoverlinde.com](http://www.eccoverlinde.com)

# The quality of a European manufacturer at the best price

## Equipment delivered as standard

- Fixed version of chain hoist suspended by a hook
- 1 hoisting speed
- Height of lift: 3 metres
- Electromagnetic disk brake with an asbestos-free lining
- Load limiter
- DIN standard upper hook and lower hook with safety latch
- IP 55 chain hoist protection
- F class protection for the lifting motor
- 48 V low voltage control by contactor
- 2-button box, IP 65, with emergency Stop/Start
- Epoxy protective paint
- Large-capacity chain container
- Owner's manual and EC certificate

## Options

- Chain hoist hooked on manual push trolley
- Chain hoist equipped with a motor trolley
- Lifting height greater than 3 metres
- Other power supply voltages
- Trolley limit switch
- Towing arm



by **ECCO** VERLINDE  
LIFTING EQUIPMENT

## Lifting chain

The lifting chain, grade class type HE-G80, is galvanised for greater resistance to wear.

## Body of the chain hoist

The standing paint is an epoxy-polyester resin powder. The paint is 70 µm thick. The parts are treated by sand blasting before painting.



## Chain container

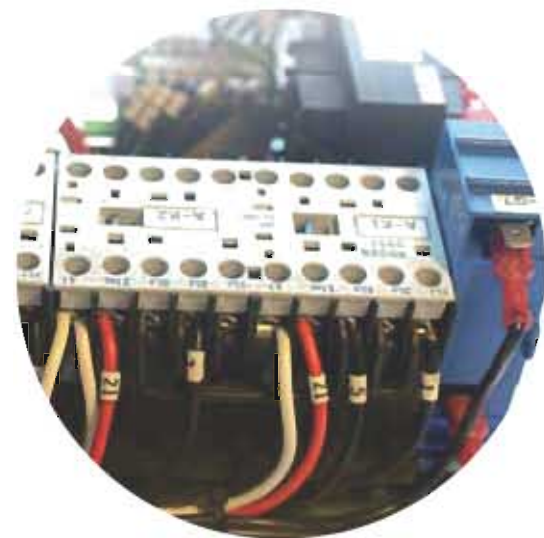
Different types of chain bag are delivered on the chain hoist, according to the load and the hoisting height. A black extruded high-density polyethylene container is delivered as standard.

## Hoisting hook

Suspension and lifting hook according DIN hoisting standard with safety latch.



# Component robust and very reliable



## EC certified electric chain hoist



## Motor

400 V / 50 Hz three-phase power supply. Motor has 50% ED and his body is made of an aluminium profile for the best heat dissipation which gives it a potential of 300 start-ups per hour.



## Button box

Various types of button boxes are delivered on the chain hoists according to the versions (fixed version or motor trolley). Protection standard IP65 and EC marking. Substantially proven components for great reliability.

## Electrics

The ECCO chain hoists are equipped with cabled contactors. The electric include a main ignition switch and an emergency stop/start switch. The chain hoist control is 48 V low voltage to provide greater safety for the user.



## Gear box/Load limiter

The limiter is incorporated into the reducing system. The gears, lubricated for life, have undergone high-quality machine and surface heat treatment.

## Rubber buffer

A very large stopping system protects the body of the chain hoist from being struck by the hoisting hook.

